







THE LODGE

California's arts and crafts era comes to life at The Lodge at Torrey Pines. The Lodge's luxurious warmth and historical detail, along with its unmatched setting overlooking the Pacific, Torrey Pines Golf Course, and the State Reserve, create an experience unique to the elegant La Jolla resort. The Lodge features 170 spacious guest rooms and suites, a full-service spa, extensive meeting and banquet facilities, two restaurants, and an exquisite sitting lobby and lounge—all ushering in a new era of art and craftsmanship.





THE ROOMS

Accommodations range in size from 520 square feet to more than 1500, offering views of the Torrey Pines Golf Course, Pacific Ocean, or The Lodge's central courtyard garden — a faithful adaptation of the natural landscape of the Torrey Pines State Reserve. Many of The Lodge's 170 guest rooms and suites have balconies and fireplaces; all feature Stickley-style furnishings, Morris-design wallpapers and carpets, granite counters, and deep soaking tubs. All are equipped with high-tech amenities including large workspaces, room safes, and high-speed internet access.





THE RESTAURANTS

Superb produce from renowned local farmers and the best of California's seafoods and meats are showcased at A.R. Valentien, the signature restaurant of The Lodge at Torrey Pines. A.R. Valentien's Chef Jeff Jackson oversees the restaurant's creative selections. The extensive California wine list features varietals from boutique vineyards. A.R. Valentien offers indoor private dining and al fresco dining on the deck in a setting that is as delicious as the food. A.R. Valentien takes its name from Albert Robert Valentien, an early 20th-century Impressionist and one of San Diego's greatest artists, and features one of the largest collections of his early works in ceramics, watercolors and oils. For more casual dining, The Grill offers guests a relaxing experience on its expansive outdoor patio including five fire pits and a custom-built wood-burning rotisserie. The Grill features a farm fresh menu for breakfast, lunch, and dinner, and boasts views of the famed Torrey Pines Golf Course.





THE SPA

Designed as a homage to the early 20th-century Scottish designer Charles Rennie Mackintosh, The Spa sparkles in its design, housing 14 treatment rooms and an expert full-time staff. The Spa's signature Coastal Sage Scrub is a holistic, luxurious, and invigorating skin-rebirth. The Spa also features relaxing lounges, cardio/strength equipment, yoga, and group fitness activities including hiking through the adjacent Torrey Pines State Reserve.



THE GOLF

Located on a bluff above the Pacific Ocean and surrounded by the Torrey Pines State Reserve, Torrey Pines Golf Course is known globally for its breathtaking vistas and challenging play. With a total of 36 holes between the world-famous South Course and newly redesigned North Course, guests can enjoy two unique courses just steps from the resort. Situated on the eighteenth green of the notable South Course, The Lodge at Torrey Pines will assist you in playing Torrey Pines as well as other top San Diego-area courses.

SITE OF THE 2008 & 2021
U.S. OPEN CHAMPIONSHIPS





MEETING SPACE

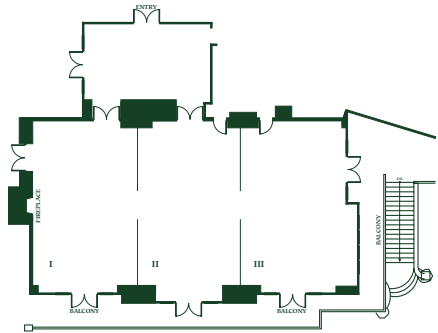
Meetings and banquets at The Lodge at Torrey Pines offer the finest amenities, inspiring views of the Pacific Ocean, and the serenity of the perfectly manicured greens at Torrey Pines Golf Course. With over 13,000 square feet of space, our resort, located in La Jolla, California, is the perfect place to organize a meeting or retreat. The Lodge is a combination of carefully interwoven elements, decor, food, service, and that indefinable something that separates elegance from pretension. Plan your next event at The Lodge, the premiere choice for meetings and banquets in San Diego.



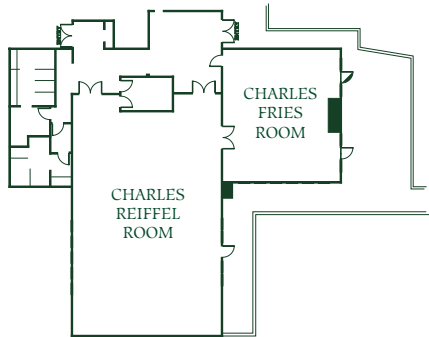




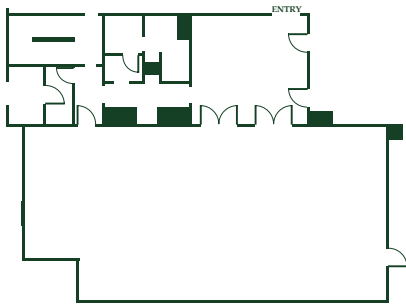
FLOOR PLAN



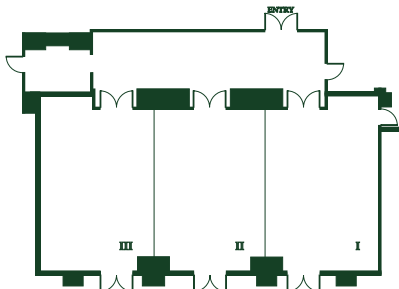
MAURICE BRAUN BALLROOM



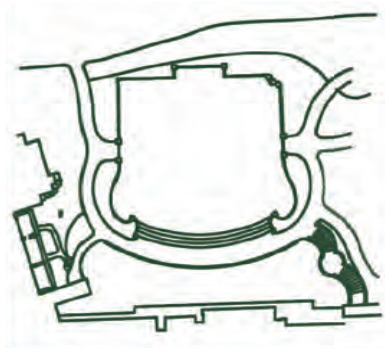
CHARLES FRIES ROOM &
CHARLES REIFFEL ROOM



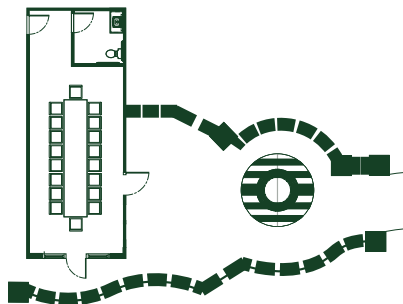
ALFRED MITCHELL ROOM



EVERETT JACKSON ROOM



ARROYO TERRACE



HUGHES COTTAGE

FLOOR PLAN

Room	Size	Square Footage	Ceiling	Recept.	Banquet	Theatre	Classroom	Square	Conf.	U-Shape	Banquet w/ Dance Floor
MAURICE BRAUN BALLROOM	42x77	3,250	11'-15'	469	288	334	150	88	-	64	240
"I"	25x42	1,050	11'-15'	154	72	112	36	42	32	30	-
"II"	26x42	1,100	11'-15'	156	72	112	36	42	32	30	-
"III"	26x42	1,100	11'-15'	156	72	112	36	42	32	30	-
CHARLES FRIES	30x36	1,100	8'-10'	151	72	95	36	30	28	25	-
CHARLES REIFFEL	40x55	2,450	11'	351	216	260	112	52	46	40	150
ALFRED MITCHELL	33x67	2,200	13'	250	192	232	80	50	44	40	130
EVERETT JACKSON	63x32	1,950	12'6"	210	180	218	80	50	-	40	120
"I"	21x32	650	12'6"	70	48	66	26	36	28	25	-
"II"	21x32	650	12'6"	70	48	66	26	36	28	25	-
"III"	21x32	650	12'6"	70	48	66	26	36	28	25	-
ARROYO TERRACE	100x100	10,000	-	469	250	-	-	-	-	-	-
THE HUGHES COTTAGE	28x14	392	8'	18	18	-	-	-	18	-	-



THE WILLIAM D. EVANS STERNWHEELER

The William D. Evans is a custom riverboat with two luxurious decks and a magnificent stained glass ceiling, making for a memorable setting. A composite of many actual steamboats that plied America's rivers in the nineteenth century, the 100-foot-long William D. Evans was launched in 1986 as a loving tribute to that era's most elegant mode of transportation. The first level consists of 1400 square feet with room for live entertainment and the "boiler room bar." The second level encompasses 1800 square feet with room to accommodate meetings, parties, receptions and social events, and, of course, the dramatic stained glass skylight.





THE BEACHES

Miles of beach stretch from the golden cliffs of Torrey Pines to the piers and sea caves of La Jolla. Watch hang gliders take off from atop Torrey Pines Glider Port and soar smoothly and silently over the ocean. Explore the tide pools along the shoreline or sunbathe au naturel at the country's largest naturalist beach. Whether by sand or by sea — hiking, walking, running, swimming, or sunning — the surrounding beaches offer serenity and rugged beauty.



NATURE AT TORREY PINES

Consider the wonder of one of the world's rarest trees: the Torrey Pine. Beautifully shaped by wind and scarce rainfall, a few thousand still hold out on the golden sandstone cliffs of an extensive natural park located adjacent to The Lodge at Torrey Pines. The sculptural forest dances along the deep canyons and ridges of sandstone — a wildflower-splashed paradise for hikers plus whale and bird watchers.







11480 North Torrey Pines Road La Jolla, California 92037 | LodgeTorreyPines.com